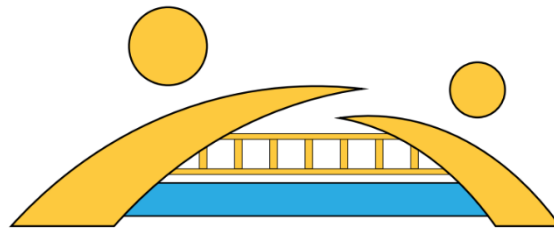


Gwasanaeth Ysgolion / Schools Service

YSGOL BRO CAEREINION



YSGOL BRO
CAEREINION

Preventing Extremism & Radicalisation Policy

This policy should be read in conjunction with key national and local legislation, guidance and policies – see Appendix 4 for full bibliography.

	Enw / Name	Llofnod / Signature	Dyddiad / Date
Cadeirydd / Chair of Governors	Cllr Gareth Jones	<i>Gareth D Jones</i>	21.11.22
Pennaeth / Headteacher	Huw Lloyd-Jones	<i>H. Lloyd-Jones</i>	21.11.22
Designated person with responsibility for Preventing Extremism & Radicalisation	Greg Jenkins		21.11.22
Adolygwyd a Chadarnhawyd Reviewed and Accepted	Tachwedd 2022 November 2022	Dyddiad Adolygu / Date of Review	Hydref 2023 Autumn 2023
Polisi Statudol i'w adolygu yn flynyddol / Statutory Policy to be reviewed annually			
Canllawiau: Cadw dysgwyr yn ddiogel LLYW.CYMRU Guidance: Keeping learners safe GOV.WALES			

1. POLICY CONTEXT

The United Kingdom's Strategy for Countering Terrorism, entitled CONTEST and as referenced in the Counter-Terrorism and Security Act 2015, contains four key work streams: Pursue, Prevent, Protect and Prepare. Each work stream comprises a number of key objectives. This Policy deals with the Prevent work stream only.

Prevent

The aim of the Prevent strategy is to reduce the threat to the UK from terrorism by stopping people becoming terrorists or supporting terrorism.

Guidance in England and Wales, see Appendix 4, explains the obligations for specified authorities to have due regard to the need to prevent people from being drawn into terrorism.

2. POLICY STATEMENT

Ysgol Bro Caereinion is fully committed to safeguarding and promoting the welfare of all its pupils. Every member of staff recognises that safeguarding against radicalisation and extremism is no different from safeguarding against any other vulnerability in today's society. The Preventing Extremism and Radicalisation Policy sets out our beliefs, strategies and procedures to protect vulnerable individuals from being radicalised or exposed to extremist views, by identifying who they are and promptly providing them with support.

3. AIMS AND PRINCIPLES

Ysgol Bro Caereinion's Preventing Extremism and Radicalisation Policy is intended to provide a framework for dealing with issues relating to vulnerability, radicalisation and exposure to extreme views. We recognise that we are well placed to be able to identify safeguarding issues and this policy clearly sets out how the school will deal with such incidents and identifies how the curriculum and ethos underpins our actions.

The objectives are that:

- All governors, teachers, teaching assistants and non-teaching staff will have an understanding of what radicalisation and extremism are and why we need to be vigilant in school.
- All governors, teachers, teaching assistants and non-teaching staff will know what the school policy is on tackling extremism and radicalisation and will follow the policy guidance swiftly when issues arise.
- All pupils will understand the dangers of radicalisation and exposure to extremist views; building resilience against these and knowing what to do if they experience them.
- All parents/carers and pupils will know that the school has policies in place to keep pupils safe from harm and that the school regularly reviews its systems to ensure they are appropriate and effective.

The main aims of this policy are to ensure that all staff are fully engaged in being vigilant about radicalisation; that they overcome professional disbelief that such issues will happen here and ensure that we work alongside other professional bodies and agencies to ensure that our pupils are safe from harm.

4. INDICATORS OF VULNERABILITY TO RADICALISATION

Radicalisation refers to the process by which a person comes to support terrorism and forms of extremism leading to terrorism. Extremism is defined by the Government in the Prevent Strategy as:

Vocal or active opposition to fundamental British values, including democracy, the rule of law, individual liberty and mutual respect and tolerance of different faiths and beliefs. We also include in our definition of extremism calls for the death of members of our armed forces, whether in this country or overseas.

Extremism is defined by the Crown Prosecution Service as:

The demonstration of unacceptable behaviour by using any means or medium to express views which:

- encourage, justify or glorify terrorist violence in furtherance of particular beliefs;
- seek to provoke others to terrorist acts;
- encourage other serious criminal activity or seek to provoke others to serious criminal acts; or
- foster hatred which might lead to inter-community violence in the UK.

There is no such thing as a “typical extremist”. Those who become involved in violent extremist actions come from a range of backgrounds and experiences, and most individuals, even those who hold radical views, do not become involved in violent extremist activity.

Pupils may become susceptible to radicalisation through a range of social, personal and environmental factors. It is known that violent extremists exploit vulnerabilities in individuals to drive a wedge between them and their families and communities, ie to create a ‘them’ and ‘us’ mentality. It is vital that all school staff are able to recognise those vulnerabilities.

Indicators of vulnerability include:

- Identity Crisis – the student/pupil is distanced from their cultural/religious heritage and experiences discomfort about their place in society;
- Personal Crisis – the student/pupil may be experiencing family tensions; a sense of isolation; and low self-esteem; they may have dissociated from their existing friendship group and become involved with a new and different group of friends; they may be searching for answers to questions about identity, faith and belonging;
- Personal Circumstances – migration; local community tensions; and events affecting the student/pupil’s country or region of origin may contribute to a sense of grievance that is triggered by personal experience of racism or discrimination or aspects of Government policy;
- Unmet Aspirations – the student/pupil may have perceptions of injustice; a feeling of failure; rejection of civic life;
- Experiences of Criminality – which may include involvement with criminal groups, imprisonment, and poor resettlement/reintegration;
- Special Educational Need – students/pupils may experience difficulties with social interaction, empathy with others, understanding the consequences of their actions and awareness of the motivations of others.

However, this list is not exhaustive, nor does it mean that all young people experiencing the above will encounter radicalisation for the purposes of violent extremism.

More critical risk factors could include:

- being in contact with extremist recruiters;
- accessing violent extremist websites, especially those with a social networking element;
- possessing or accessing violent extremist literature;
- using extremist narratives and a global ideology to explain personal disadvantage;
- justifying the use of violence to solve societal issues;
- joining or seeking to join extremist organisations;
- significant changes to appearance and/or behaviour;
- experiencing a high level of social isolation resulting in issues of identity crisis and/or personal crisis.

5. PROCEDURES FOR REFERRALS

It is important for us to be constantly vigilant and remain fully informed about the issues which affect the local area, town and society in which we work and live. Staff are reminded to suspend any 'professional disbelief' that instances of radicalisation 'could happen here' and to be 'professionally inquisitive' where concerns arise, referring any concerns through the appropriate channels. (See Appendix 1 – Dealing with Referrals)

We believe that it is possible to intervene to protect people who are vulnerable. **Early intervention is vital** and staff must be aware of the established processes for front line professionals to refer concerns about individuals and/or groups. We must have the confidence to challenge and to intervene and ensure that we have strong safeguarding practices based on the most up-to-date guidance and best practise.

Designated Senior Leaders for Child Protection and Safeguarding will be appropriately trained in identifying potential radicalisation and extremism and will deal swiftly with any referrals made by staff or with concerns reported by staff.

The Headteacher/Designated Senior Person will discuss the most appropriate course of action on a case-by-case basis and will decide when a referral to external agencies is needed (see Appendix 1 – Dealing with Referrals). Advice can always be sought from the Powys Children's Services. As with any child protection referral, staff must be made aware that if they do not agree with a decision not to refer, they can make the referral themselves and contact details to do this (via Powys People Direct Tel: 01597 827666. Email: people.direct@powys.gov.uk) are displayed in the staffroom.

6. GOVERNORS, LEADERS AND STAFF

The Head teacher and all other members of the SLT/DSP are the leaders for referrals relating to extremism and radicalisation. In the unlikely event that SLT members are not available, all staff know the channels by which to make referrals via the safeguarding information displayed in the staffroom.

Staff will be fully briefed about what to do if they are concerned about the possibility of radicalisation relating to a pupil, or if they need to discuss specific children whom they consider to be vulnerable to radicalisation or extremist views.

The SLT/DSP will work in conjunction with the Headteacher, Pastoral Care Team and external agencies to decide the best course of action to address concerns which arise.

Prejudicial behaviour can be a factor in radicalisation and extremism. With this in mind, Ysgol Bro Caereinion has updated procedures for dealing with prejudicial behaviour, as outlined in the Positive Behaviour Policy and Strategic Equality Plan/Policy.

7. THE ROLE OF THE CURRICULUM

Our curriculum is “broad and balanced”. It promotes understanding, respect, tolerance and diversity. Children are encouraged to share their views and recognise that they are entitled to have their own different beliefs which should not be used to influence others.

Our PSHE provision is embedded across the curriculum. It directs our assemblies and underpins the ethos of the school. We strive to equip our pupils with confidence, self-belief, respect and tolerance as well as setting high standards and expectations for themselves.

Children are taught about how to stay safe when using the internet and are encouraged to recognise that people are not always who they say they are online. They are taught to seek adult help if they are upset or concerned about anything they read or see on the internet.

8. STAFF TRAINING

Through INSET opportunities in school, we will ensure that our staff are fully aware of the threats, risks and vulnerabilities that are linked to radicalisation; are aware of the process of radicalisation, how this might be identified early on and how we can provide support as a school to ensure that our children think critically, develop self-esteem, global citizenship, resilience and are thus able to resist involvement in radical or extreme activities.

9. VISITORS AND THE USE OF SCHOOL PREMISES

If any member of staff wishes to invite a visitor in the school, they must first complete the appropriate school documentation. Only after written agreement from the Headteacher can the visitor enter school and then they will be subject to Safeguarding Checks including DBS checks, if appropriate, and photo identification. Children are NEVER left unsupervised with external visitors, regardless of safeguarding check outcomes.

Upon arriving at the school, all visitors including contractors, will read the child protection and safeguarding guidance and be made aware of who the DSLs are and how to report any concerns which they may experience.

If any agreement is made to allow non-school groups or organisations to use the premises, appropriate checks will be made before agreeing the contract. Usage will be monitored and in the event of any behaviour not in-keeping with the Tackling Extremism and Radicalisation Policy, the school will contact the police and terminate the contract.

(School / Service) values freedom of speech and the expression of beliefs and ideology as fundamental rights underpinning our society’s values. Both pupils/students and teachers have the right to speak freely and voice their opinions. However, freedom comes with responsibility and free speech that is designed to manipulate the vulnerable or that leads to violence and harm of others goes against the moral principles in which freedom of speech is valued. Free speech is not an unqualified privilege; it is subject to laws and policies governing equality, human rights, community safety and community cohesion.

The current threat from terrorism in the United Kingdom may include the exploitation of vulnerable people, to involve them in terrorism or in activity in support of terrorism. The normalisation of extreme views may also make children and young people vulnerable to future manipulation and exploitation. *(School / Service)* is clear that this exploitation and radicalisation should be viewed as a safeguarding concern.

Definitions of radicalisation and extremism, and indicators of vulnerability to radicalisation are in the Appendix 2.

(*School / Service*) seeks to protect children and young people against the messages of all violent extremism including, but not restricted to, those linked to extremist Islamist ideology, or to Far Right/Neo-Nazi/White Supremacist ideology.

10. RISK REDUCTION & RESPONSE

The school governors, the Headteacher and the Designated Safeguarding Lead will assess the level of risk within the school and put actions in place to reduce that risk. Risk assessment may include consideration of the school's RE curriculum, PSHE policy, assembly policy, use of school premises by external agencies, integration of pupils by gender and SEN, anti-bullying policy and other issues specific to the school's profile, community and philosophy.

Our school, will identify a Prevent Single Point of Contact (SPOC) who will be the lead within the organisation for safeguarding in relation to protecting individuals from radicalisation and involvement in terrorism: this will normally be the Designated Safeguarding Lead. The SPOC for (*School / Service*) is (*Name of SPOC*). The responsibilities of the SPOC are described in Appendix 3.

When any member of staff has concerns that a pupil may be at risk of radicalisation or involvement in terrorism, they should speak with the SPOC and to the Designated Safeguarding Lead if this is not the same person.

Numerous factors can contribute to and influence the range of behaviours that are defined as violent extremism, but most young people do not become involved in extremist action. For this reason the appropriate interventions in any particular case may not have any specific connection to the threat of radicalisation, for example they may address mental health, relationship or drug/alcohol issues.

11. MULTI-AGENCY CHANNEL PANELS IN POWYS

Powys' duties in respect of Channel Panels will be discharged on a multi-agency basis by the Community Safety Partnership and will adhere to the Prevent Strategy and Channel Duty Guidance as referenced in Appendix 4. The Community Safety Partnership Co-ordinator will chair the Channel Panels in Powys.

The multi-agency Powys Local (Safeguarding) Operational Group will provide the arena and governance for Channel Panels and their agreement.

12. POLICY REVIEW

12.1 Individual School Review

Ysgol Bro Caereinion Tackling Extremism and Radicalisation Policy will be reviewed annually as part of the overall Child Protection and Safeguarding policy review.

12.2 Preventing Extremism and Radicalisation Policy 2015/16 Review

This model Policy will be reviewed on an annual basis by the multi-agency Powys Local (Safeguarding) Operational Group.

From an Education perspective, Membership of this Partnership includes representation from Head Teachers of Primary & Secondary schools, and the Schools Service Designated Lead for Safeguarding and Child Protection

Appendix 1

Dealing with Referrals of Prejudicial Behaviour

We are aware of the potential indicating factors that a child is vulnerable to being radicalised or exposed to extreme views, including peer pressure, influence from other people or the internet, bullying, crime and anti-social behaviour, family tensions, race/hate crime, lack of self-esteem or identity, prejudicial behaviour and personal or political grievances.

In the event of prejudicial behaviour the following system will be followed;

- All incidents of prejudicial behaviour will be reported directly to the SLT/Designated Senior Person or the Head Teacher.
- All incidents of prejudicial behaviour will be fully investigated and recorded in line with the Positive Behaviour Policy and records will be kept in line with procedures for any other safeguarding incident.
- Parents/carers will be contacted and the incident discussed in detail, aiming to identify motivating factors, any changes in circumstances at home, parental views of the incident and to assess whether the incident is serious enough to warrant a further child protection referral. A note of this meeting is kept alongside the initial incident report in the School's Child Protection / Safeguarding file.
- The SLT/Designated Senior Person will follow-up any further reports of prejudicial behaviour for a period of four weeks after the incident to assess whether there is a change in behaviour and/or attitude. A further meeting with parents would be held if there is not a significant positive change in behaviour.

Dealing with Referrals of Potential Radicalisation or Extremism

- Serious incidents or concerns about potential radicalisation or extremism will be referred to the Powys Children's Services through the usual child protection referral process (via Powys People Direct
- Tel: 01597 827666.
Email: people.direct@powys.gov.uk) as displayed in the School Staffroom.

Appendix 2

Glossary of Terms

Channel (see Appendix 4) is a programme which focuses on providing support at an early stage to people who are identified as being vulnerable to being drawn into terrorism. The programme uses a multi-agency approach to protect vulnerable people by:

- identifying individuals at risk;
- assessing the nature and extent of that risk; and
- developing the most appropriate support plan for the individuals concerned.
- Channel may be appropriate for anyone who is considered at risk from radicalisation.

'Extremism' is defined in the 2011 Prevent strategy as vocal or active opposition to fundamental British values, including democracy, the rule of law, individual liberty and mutual respect and tolerance of different faiths and beliefs. We also include in our definition of extremism calls for the death of members of our armed forces, whether in this country or overseas.

'Having due regard' means that the authorities should place an appropriate amount of weight on the need to prevent people being drawn into terrorism when they consider all the other factors relevant to how they carry out their usual functions.

'Interventions' are projects intended to divert people who are being drawn into terrorist activity. Interventions can include mentoring, counselling, theological support, encouraging civic engagement, developing support networks (family and peer structures) or providing mainstream services (education, employment, health, finance or housing).

'Non-violent extremism' is extremism, as defined above, which is not accompanied by violence. 'Prevention' in the context of this document means reducing or eliminating the risk of individuals becoming involved in terrorism.

Prevent includes but is not confined to the identification and referral of those at risk of being drawn into terrorism into appropriate interventions. These interventions aim to divert vulnerable people from radicalisation.

'Radicalisation' refers to the process by which a person comes to support terrorism and extremist ideologies associated with terrorist groups.

'Safeguarding' is the process of protecting vulnerable people, whether from crime, other forms of abuse or (in the context of this document) from being drawn into terrorist related activity.

The current UK definition of **'terrorism'** is given in the Terrorism Act 2000 (TACT 2000). In summary this defines terrorism as an action that endangers or causes serious violence to a person/people; causes serious damage to property; or seriously interferes or disrupts an electronic system. The use or threat must be designed to influence the government or to intimidate the public and is made for the purpose of advancing a political, religious or ideological cause.

'Terrorist-related offences' are those (such as murder) which are not offences in terrorist legislation, but which are judged to be committed in relation to terrorism.

'Vulnerability' describes the condition of being capable of being injured; difficult to defend; open to moral or ideological attack. Within Prevent, the word describes factors and characteristics associated with being susceptible to radicalisation.

Appendix 3

PREVENTING VIOLENT EXTREMISM - ROLES AND RESPONSIBILITIES OF THE SINGLE POINT OF CONTACT (SPOC)

The SPOC for (*School / Service*) is (*Name of SPOC*), who is responsible for:

- ensuring that staff of the school are aware who is the SPOC in relation to protecting students/pupils from radicalisation and involvement in terrorism;
- maintaining and applying a good understanding of the relevant guidance in relation to preventing students/pupils from becoming involved in terrorism, and protecting them from radicalisation by those who support terrorism or forms of extremism which lead to terrorism;
- raising awareness about the role and responsibilities of (*School / Service*) in relation to protecting students/pupils from radicalisation and involvement in terrorism;
- monitoring the effect in practice of the school's PSHE/ RE curriculum and assembly policy to ensure that they are used to promote community cohesion and tolerance of different faiths and beliefs;
- raising awareness within the school about the safeguarding processes relating to protecting students/pupils from radicalisation and involvement in terrorism;
- acting as the first point of contact within the school for case discussions relating to students/pupils who may be at risk of radicalisation or involved in terrorism;
- collating relevant information in relation to referrals of vulnerable students/pupils into the safeguarding process;
- attending meetings as necessary and carrying out any actions as agreed;
- reporting progress on actions and
- sharing any relevant additional information in a timely manner.

Appendix 4

Bibliography & References

- CONTEST The United Kingdom's Strategy for Countering Terrorism (July 2011)
https://www.gov.uk/government/uploads/system/uploads/attachment_data/file/97995/strategy-contest.pdf
- Prevent Strategy HM Government (June 2011)
https://www.gov.uk/government/uploads/system/uploads/attachment_data/file/97976/prevent-strategy-review.pdf
- Channel Duty Guidance. Protecting vulnerable people from being drawn into terrorism. Statutory guidance for Channel panel members and partners of local panels. HM Government (2015)
https://www.gov.uk/government/uploads/system/uploads/attachment_data/file/425189/Channel_Duty_Guidance_April_2015.pdf
- Respect and resilience. Developing community cohesion – a common understanding for schools and their communities. Welsh Assembly Government Guidance, Young Wales (January 2011)
<http://gov.wales/docs/dcells/publications/110209respecten.pdf>
- Keeping learners safe. The role of local authorities, governing bodies and proprietors of independent schools under the Education Act 2002. Welsh Government (January 2015)
<http://gov.wales/docs/dcells/publications/150114-keeping-learners-safe.pdf>
- Social Services and Well-being (Wales) Act 2014
- Safeguarding & Child Protection Powys County Council (PCC) Policy
- Strategic Equality Plan / policy (PCC)
- Anti-Bullying Policy (PCC)
- Positive Behaviour Management Policy (PCC)
- E-Safety Policy (PCC)
- Children and Young people with Risk Taking Behaviours – Multi-agency protocol June 2014